

**TECHNICAL MANUAL**

**ORGANIZATIONAL MAINTENANCE REPAIR PARTS  
AND SPECIAL TOOLS LIST**

**FOR**

**MAGNETIC COMPASS CALIBRATOR SET  
AN/ASM-339(V)1 (NSN 6605-00-782-0281)**

**AND**

**ADAPTER KIT, MAGNETIC COMPASS CALIBRATOR SET  
MK-1040A/ASN (NSN 6605-00-816-0329)**

**TECHNICAL MANUAL**

**ORGANIZATIONAL MAINTENANCE REPAIR PARTS  
AND SPECIAL TOOLS LIST  
FOR  
MAGNETIC COMPASS CALIBRATOR SET  
AN/ASM-339(V)1 (NSN 6605-00-782-0281)  
AND  
ADAPTER KIT, MAGNETIC COMPASS CALIBRATOR SET  
MK-1040A/ASN (NSN 6605-00-816-0329)**

**ORGANIZATIONAL MAINTENANCE REPAIR PARTS AND SPECIAL TOOLS LISTS  
FOR  
MAGNETIC COMPASS CALIBRATOR SET  
AN/ASM-339(V)1 (NSN 6605-00-782-0281)  
AND  
ADAPTER KIT, MAGNETIC COMPASS CALIBRATOR SET  
MK-1040A/ASN (NSN 6605-00-816-0329)  
Current as of 11 December 1978**

**REPORTING OF ERRORS**

You can improve this manual by recommending improvements using DA Form 2028-2 located in the back of the manual. Simply tear out the self-addressed form, fill it out as shown on the sample, fold it where shown, and drop it in the mail.

If there are no blank DA Form 2028-2 in the back of your manual, use the standard DA Form 2028 (Recommended Changes to Publications and Blank Forms) and forward to the Commander, US Army Communications and Electronics Materiel Readiness Command, ATTN: DRSEL-ME-MQ, Fort Monmouth, New Jersey 07703.

In either case a reply will be furnished direct to you.

**Table of Contents**

SECTION		Page	Illus Figure
	I. Introduction.....	1	
	II. Repair parts list.....	5	
Group	00 Magnetic Compass Calibrator Set AN/ASM-339(V)I.....	5	1
	01 Tripod Electrical, Equipment MX-8114/U.....	7	2
	02 Interconnecting Box J-2812/ASM-339(V) (No parts authorized)		
	03 Reel, Cable RL-255/U .....	9	3
	0301Cable Assembly, Special Purpose, Electrical CX-10867/U (50 Ft ) (W2) (No parts authorized)		
	04 Reel, Rack Assembly RL-256/U .....	11	4
	0401 .....Cable Assembly, Special Purpose CX-10868/U (100 Ft ) (W1) (No parts authorized)		
	05 Reel, Cable RL-257/U.....	13	5
	0501Cable Assembly, Special Purpose, Electrical CX-10867/U (200 Ft ) (W3) (No parts authorized)		
	06 Power Supply PP-6056/ASM-339(V).....	15	6
	0601 Inverter, power static (No parts authorized)		
	060101.....Electronic component assembly (No parts authorized)		
	07 Case, Calibrator Set CY-6479/ASM-339(V) (No parts authorized)		
	08 Control, Magnetic Compass Calibrator Set C-7694/ASM-339(V) .....	17	7, 8
	0801 ..... Case, control, compass calibrator (No parts authorized)		
	0802 .....Amplifier, regulator (1A1, 1A2) (No parts authorized)		
	0803 .....Amplifier, angle indicator (1A7) (No parts authorized)		
	0804 ..... Gear case motor (1A3, 1A4) (No parts authorized)		
	0805 ..... Regulator supply (I A5, 1A6) (No parts authorized)		
	0806 ..... Indicator, heading error (1A8) (No parts authorized)		
	09 Turntable, Transmitter OQ-30/ASM-339(V).....	23	9
	10 Monitor, Magnetic Field OQ-31/ASM-339(V).....	25	10
	1001 Motor Assembly MX-8113/ASM-339(V) .....	27	11
	11 Alignment Kit, Electronic Equipment MK-1106/ASM-339(V)1.....	29	12
	1101 Telescope, Azimuth SU-45/ASM-339(V) (No parts authorized)		

\* This manual, together with TM 11-4920-292-40P, 4 July 1979, supersedes so much of TM 11-4920-292-15, 2 August 1968, as pertains to repair parts and special tools lists.

		Page	Illus Figure
Group	12	Field Tester, Magnetic Compass Calibrator AN/ASM-344 .....	33
		1201 Cable Assembly, Special Purpose, Branched CX-10869/ASM-344 (W4) (No parts authorized)	13
		1202 Detector Assembly, Magnetic Azimuth DT-354/ASM-344 .....	35
	00	Adapter Kit, Magnetic Compass Calibrator Set MK-1040A/ASN .....	37
	01	Cable Assembly, Special CX-10938/ASN (No parts authorized)	14
	02	Cable Assembly, Special CX-10934/ASN (W17) (No parts authorized)	15
	03	Cable Assembly, Special CX-10939/ASN (W1) (No parts authorized)	
	04	Cable Assembly, Special CX-10940/ASN (W2) (No parts authorized)	
	05	Cable Assembly, Special CX-10941/ASN (W3) (No parts authorized)	
	06	Cable Assembly, Special CX-10937/ASN (W19) (No parts authorized)	
	07	Cable Assembly, Special Purpose, Branched CX-10935/ASN (W13) (No parts authorized)	
	08	Cable Assembly, Special Purpose CX-10936/ASN (W18) (No parts authorized)	
SECTION	III.	Special tools list (Not Applicable)	
Group	13	Special Tools and Support Equipment for AN/ASM-339(V)1 (No tools authorized)	
SECTION	IV.	National stock number and part number index .....	38

**SECTION I  
INTRODUCTION**

**1. Scope**

This manual lists spares and repair parts; special tools, special test, measurement, and diagnostic equipment (TMDE), and other special support equipment required for performance of organizational maintenance of the AN/ASM-339(V)1 and MK-1040/ASN. It authorizes the requisitioning and issue of spares and repair parts as indicated by the source and maintenance codes.

**2. General**

This Repair Parts and Special Tools List is divided into the following sections:

a. *Section II. Repair Parts List.* A list of spares and repair parts authorized for use in the performance of maintenance. The list also includes parts which must be removed for replacement of the authorized parts. Parts lists are composed of functional groups in numeric sequence, with the parts in each group listed in figure and item number sequence.

b. *Section III Special Tools List.* Not applicable.

c. *Section IV. National Stock Number and Part Number Index.* A list, in National item identification number (NIIN) sequence, of all National stock numbers (NSN) appearing in the listings, followed by a list, in alphameric sequence, of all part numbers appearing in the listings. National stock numbers and part numbers are cross-referenced to each illustration figure and item number appearance.

**3. Explanation of Columns**

a. *Illustration.* This column is divided as follows.

(1) *Figure number.* Indicates the figure number of the Illustration on which the item is shown.

(2) *Item number.* The number used to identify item called out in the illustration.

b. *Source, Maintenance, and Recoverability (SMR) Codes.*

(1) *Source code.* Source codes indicate the manner of acquiring support items for maintenance, repair, or overhaul of end items. Source codes are entered in the first and second positions of the Uniform SMR Code format as follows:

<i>Code</i>	<i>Definition</i>
-------------	-------------------

PA - Item procured and stocked for anticipated or known usage.

PD - Support item, excluding support equipment, procured for initial issue or outfitting and stocked only for subsequent or additional initial issues or outfittings. Not subject to automatic replenishment.

XD - A support item that is not stocked When required, item will be procured through normal supply channels.

**NOTE**

Cannibalization or salvage may be used as a source of supply for any items source coded above except those coded XA and aircraft support items as restricted by AR 700-42.

(2) *Maintenance code.* Maintenance codes are assigned to indicate the levels of maintenance authorized to USE and REPAIR support items The maintenance codes are entered in the third and fourth positions of the Uniform SMR Code format as follows:

(a) The maintenance code entered in the third position will indicate the lowest maintenance level authorized to remove, replace, and use the support item. The maintenance code entered in the third position will indicate one of the following levels of maintenance.

<i>Code</i>	<i>Application/Explanation</i>
O	Support item is removed, replaced, used at the organizational level.

(b) The maintenance code entered in the fourth position indicates whether the item is to be repaired and identifies the lowest maintenance level with the capability to perform complete repair (i e, all authorized maintenance functions). This position will contain one of the following maintenance codes.

<i>Code</i>	<i>Application/Explanation</i>
H	The lowest maintenance level capable of complete repair of the support item is the general support level.
D	The lowest maintenance level capable of complete repair of the support item is the depot level.
Z	Nonreparable No repair is authorized.

(3) *Recoverability code.* Recoverability codes are assigned to support items to indicate the disposition action on unserviceable items. The recoverability code is entered in the fifth position of the Uniform SMR Code format as follows:

<i>Recoverability codes</i>	<i>Definition</i>
Z	Nonreparable Item. When unserviceable, condemn and dispose at the level indicated in position 3.
H	Reparable item. When uneconomically repairable, condemn and dispose at the general support level.
L	Reparable item. Repair, condemnation, and disposal not authorized below depot/specialized repair activity level.

c. *National Stock Number.* Indicates the National stock number assigned to the item and will be used for requisitioning purposes.

d. *Part Number.* Indicates the primary number used by the manufacturer (individual, company, firm, corporation, or Government activity), which controls the design and characteristics of the item by means

of its engineering drawings, specifications, standards, and inspection requirements to identify an item or range of items.

**NOTE**

When a stock numbered item is requisitioned, the repair part received may have a different part number than the part being replaced.

*e. Federal Supply Code for Manufacturer (FSCM).* The FSCM is a 5-digit numeric code listed in SB 708-42 which is used to identify the manufacturer, distributor, or Government agency, etc.

*f. Description.* Indicates the Federal item name and, if required, a minimum description to identify the item.

*g. Unit of Measure (U/M).* Indicates the standard of the basic quantity of the listed item as used in performing the actual maintenance function. This measure is expressed by a two-character alphabetical abbreviation (e.g., ea., in, pr, etc.). When the unit of measure differs from the unit of issue, the lowest unit of issue that will satisfy the required units of measure will be requisitioned.

*h. Quantity Incorporated in Unit.* Indicates the quantity of the item used in the breakout shown on the illustration figure, which is prepared for a functional group, subfunctional group, or an assembly.

**4. Special Information**

*a.* Usable on codes are shown in the description column. Uncoded items are applicable to all models. Identification of the usable on codes used in this publication are:

<i>Code</i>	<i>Used on</i>
2CT	AN/ASM-339(V) 1
DS2	MK-1040A/ASN

*b.* The following publication pertains to the AN/ASM-339(V)1, MK-1040A/ASN and its components: TM 11-4920-292-15, Magnetic Compass Calibrator Set

AN/ASM-339(V) 1 and Magnetic Compass Calibrator Set Adapter Kit MK-1040A/ASN

*c.* The illustrations in this manual are identical to those published in TM 11-4920-292-40P. Only those parts assigned the third position SMR maintenance code "C" or "O" are listed in the tabular listing, therefore, there may be a break in the item number sequence. Only illustrations containing organizational authorized items appear in this manual.

**5. How to Locate Repair Parts**

*a.* When National stock number or part number is unknown.

(1) *First.* Using the table of contents, determine the functional group within which the item belongs. This is necessary since illustrations are prepared for functional groups and listings are divided into the same groups.

(2) *Second.* Find the illustration covering the functional group to which the item belongs.

(3) *Third.* Identify the item on the illustration and note the illustration figure and item number of the item.

(4) *Fourth* Using the Repair Parts Listing, find the figure and item number noted on the illustration.

*b.* When National stock number or part number is known.

(1) *First* Using the Index of National Stock Numbers and Part Numbers, find the pertinent National stock number or part number. This index is in NIIN sequence followed by a list of part numbers in alphameric sequence, cross-referenced to the illustration figure number and item number.

(2) *Second* After finding the figure and item number, locate the figure and item number in the repair parts list.

**6. Abbreviations**

Not applicable

(Next printed page is 4)

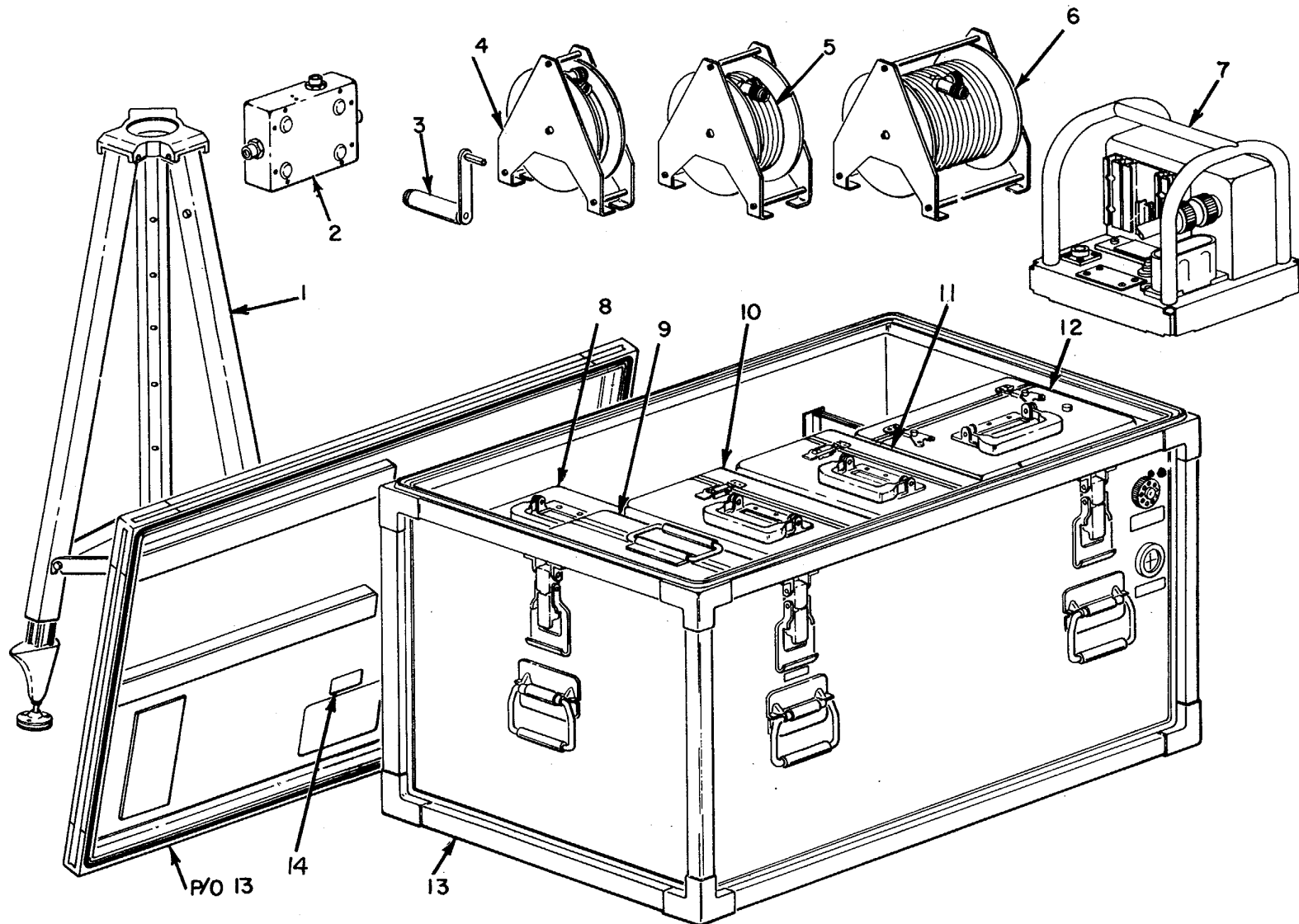


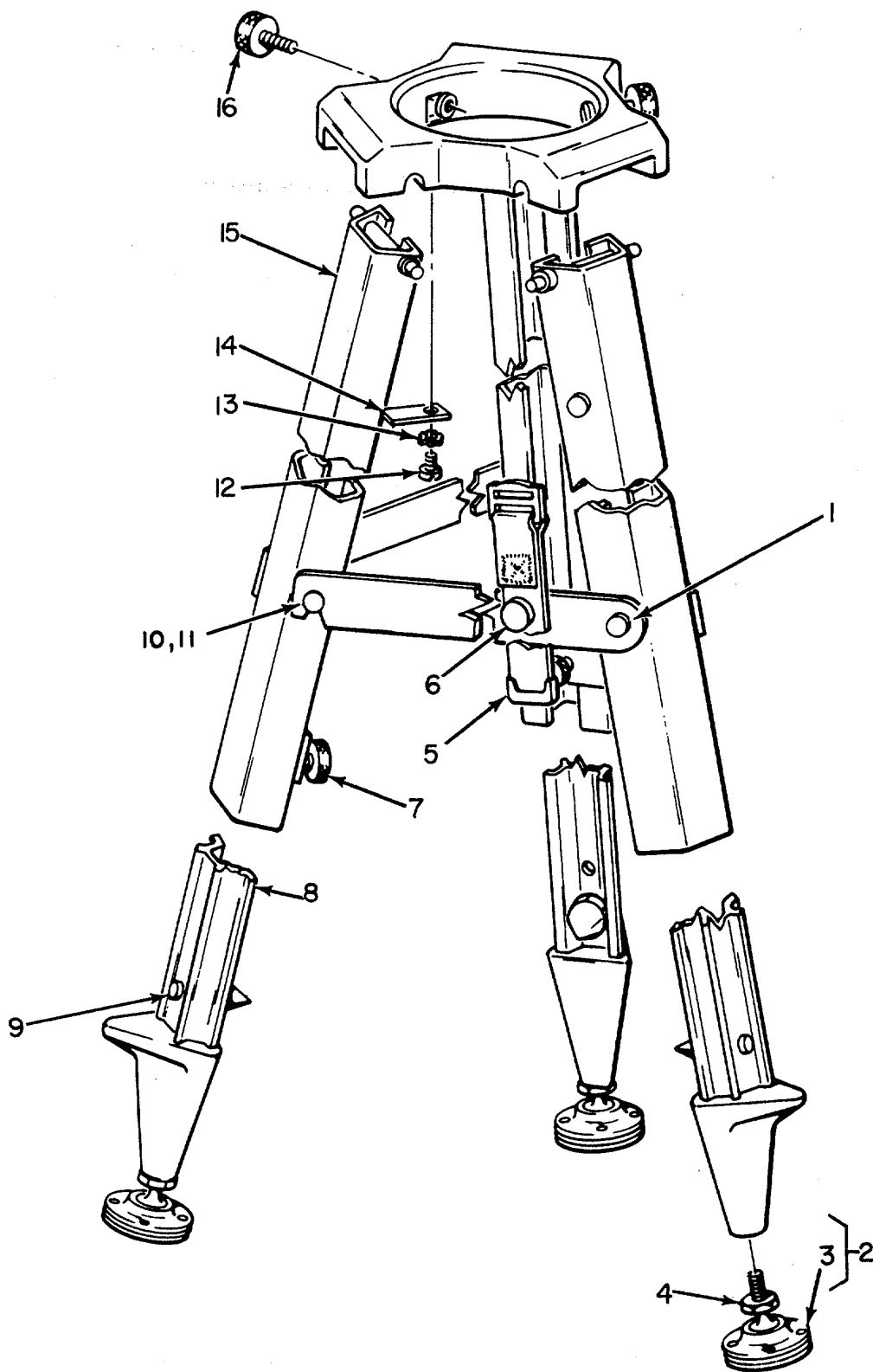
Figure 1. Magnetic Compass Calibrator Set AN/ASM-339 (V)1.

**SECTION II**

**TM 11-4920-292-20P**

(1) ILLUSTRATION		(2)	(3)	(4)	(5)	(6)	(7)	(8)
(a) FIG NO.	(b) ITEM NO.	SMR CODE	NATIONAL STOCK NUMBER	PART NUMBER	FSCM	DESCRIPTION  USABLE ON CODE	U/M	QTY INC IN UNIT
						GROUP 00 MAGNETIC COMPASS CAL SET  AN/ASM-3394V)1		
1	1	XDOHH	6605-00-782-0229	MX8114/U	80058	TRIPOD, ELEC, EQPT .....	EA	1
1	2	PAOHH	6605-00-182-0282	J-2812/ASM-339(V)	80058	INTERCONNECTING BOX .....	EA	1
1	3	PAOZZ	5340-00-880-7987	MX-8108/U	80058	CRANK ASSY, HAND .....	EA	1
1	4	XDOHH		RL-255/U	80058	REEL, CABLE .....	EA	1
1	5	XDOHH	8130-00-935-7133	RL256/U	80058	REEL RACK ASSY .....	EA	1
1	6	XDOHH		RL-257/U	80058	REEL, CABLE .....	EA	1
1	7	PAOHH	6605-00-782-0228	PP-6056/ASM-339(V)	80058	POWER SUPPLY .....	EA	1
1	8	PAOHH	4920-00-089-0186	2587311	07187	FIELD TESTER MAG .....	EA	1
1	9	PAOHH	6605-00-782-0256	MK-1106/ASM-339(V)		ALIGNMENT KIT, ELEC.....	EA	1
1	10	PAOHH	6605-00-782-0276	OQ-31/ASM-339(V)	80058	MONITOR MAG FIELD.....	EA	1
1	11	PAOHH	6605-00-782-0234	OQ-30/ASM-339(V)	80058	TURNTABLE, XMTR.....	EA	1
1	12	PAOHH	6605-00-782-0231	C-7694/ASM-339(V)	80058	CONTROL, MAG CMPS.....	EA	1
1	13	PDDDL	6605-00-782-0300	CY-6479/ASM-339(V)	80058	CASE, CALIBRATOR, SET.....	EA	1





EL5KZ002

Figure 2. Tripod Electrical, Equipment MX-8114/U.

**SECTION II**

**TM 11-4920-292-20P**

(1) ILLUSTRATION		(2)	(3)	(4)	(5)	(6)	(7)	(8)
(a) FIG NO.	(b) ITEM NO.	SMR CODE	NATIONAL STOCK NUMBER	PART NUMBER	FSCM	DESCRIPTION  USABLE ON CODE	U/M	QTY INC IN UNIT
						GROUP 01 TRIPOD ELECTRICAL, EQUIPMENT  MX-8114/U		
2	7	PAOZZ	5355-00-814-7237	2503008	07187	KNOB .....	EA	3
2	16	PAOZZ	5355-00-814-7236	2503007	07187	KNOB .....	EA	2

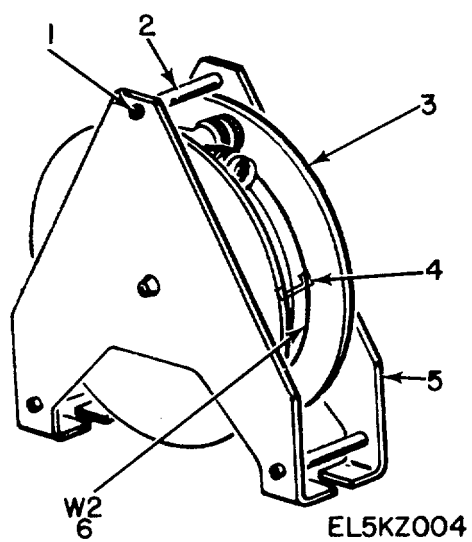
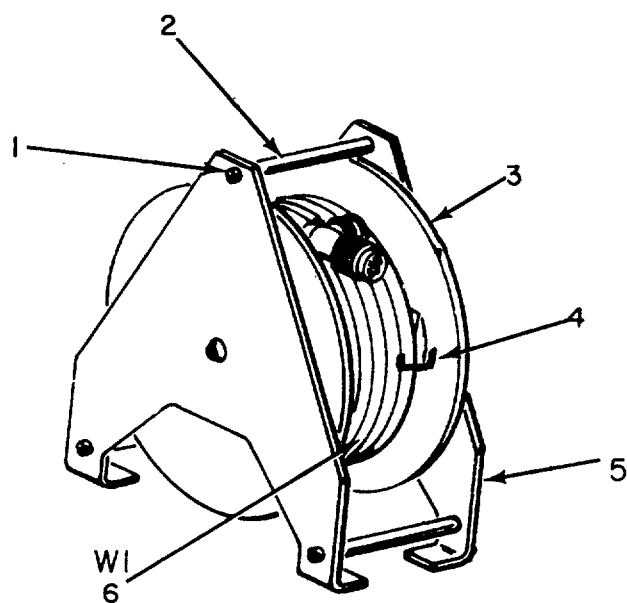


Figure 3. Reel, Cable RL-255/U.

**SECTION II**

**TM 11-4920-292-20P**

(1) ILLUSTRATION		(2)	(3)	(4)	(5)	(6)	(7)	(8)
(a) FIG NO.	(b) ITEM NO.	SMR CODE	NATIONAL STOCK NUMBER	PART NUMBER	FSCM	DESCRIPTION  USABLE ON CODE	U/M	QTY INC IN UNIT
3	6	PAOHH	6605-00-782-0237	CX-10867/U(50FT)	80058	GROUP 03 REEL, CABLE RL-255/U CABLE ASSY, SP, ELEC .....	EA	1



EL5KZ006

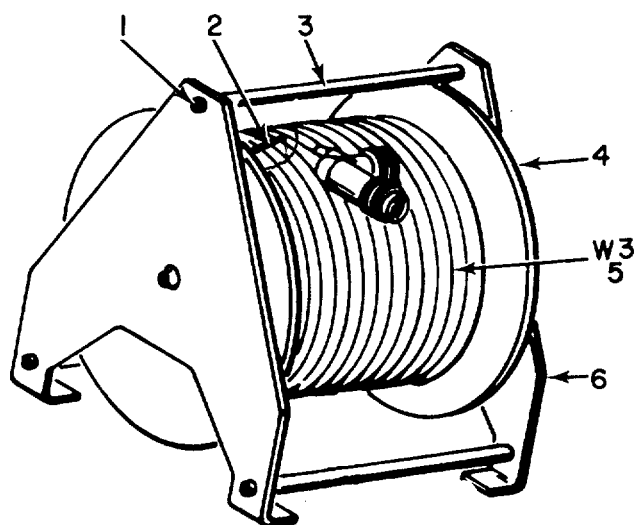
±

Figure 4. Reel, Rack Assembly RL-256/U.

**SECTION II**

**TM 11-4920-292-20P**

(1) ILLUSTRATION		(2)	(3)	(4)	(5)	(6)	(7)	(8)
(a) FIG NO.	(b) ITEM NO.	SMR CODE	NATIONAL STOCK NUMBER	PART NUMBER	FSCM	DESCRIPTION  USABLE ON CODE	U/M	QTY INC IN UNIT
4	6	PAOHH	6605-00-782-0291	CX-10868/U(100FT)	80058	GROUP 04 REEL, RACK ASSEMBLY RL-256/U CABLE ASSY, SP .....	EA	1



EL5KZ008

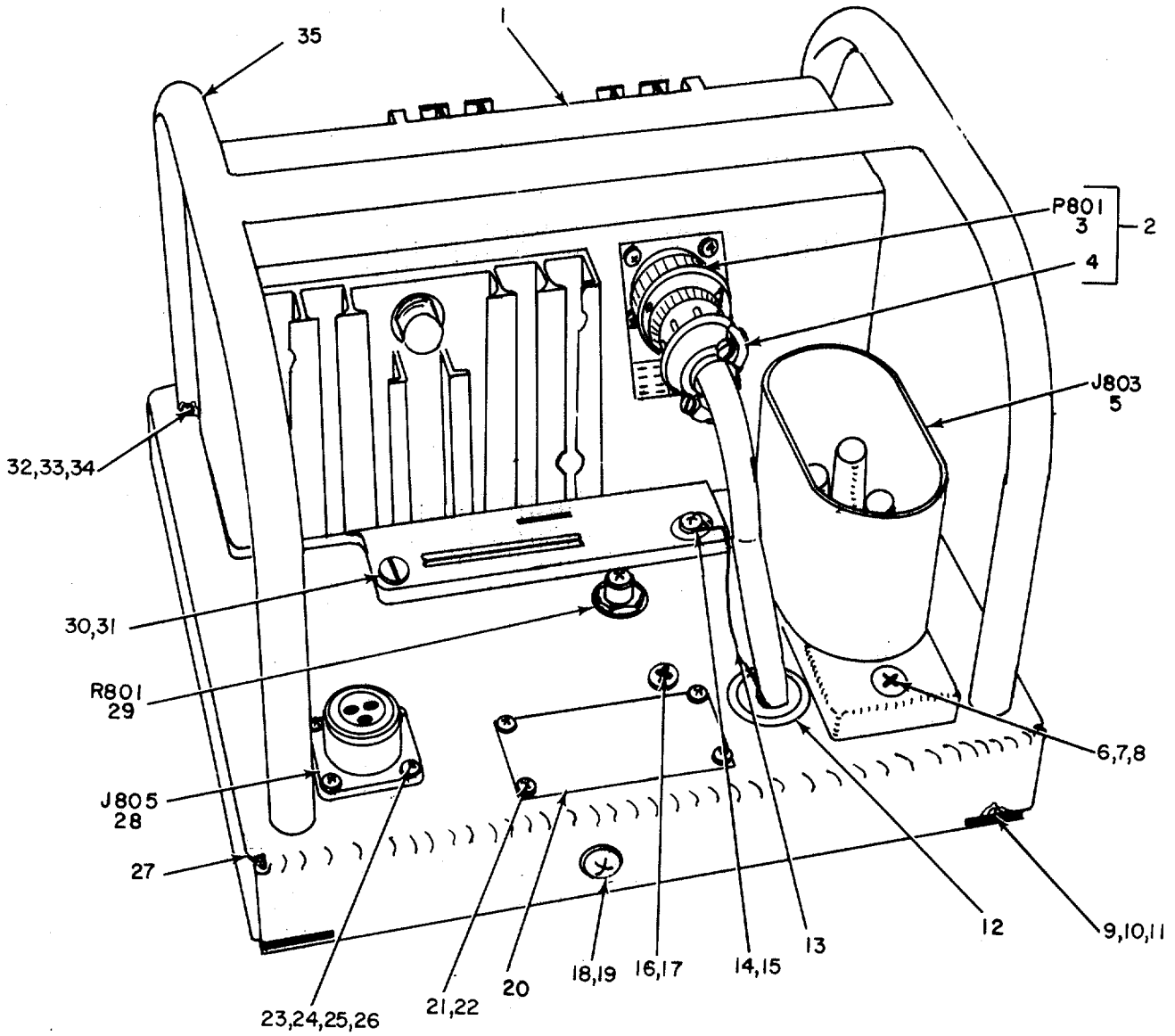
Figure 5. Reel, Cable RL-257/U.

**SECTION II**

**TM 11-4920-292-20P**

(1) ILLUSTRATION		(2)	(3)	(4)	(5)	(6)	(7)	(8)
(a) FIG NO.	(b) ITEM NO.	SMR CODE	NATIONAL STOCK NUMBER	PART NUMBER	FSCM	DESCRIPTION  USABLE ON CODE	U/M	QTY INC IN UNIT
5	5	PAOHH	6605-00-782-0288	CX-10867/U (200FT)	80058	GROUP 05 REEL, CABLE RL-257/U  CABLE ASSY, SP, ELEC .....	EA	1





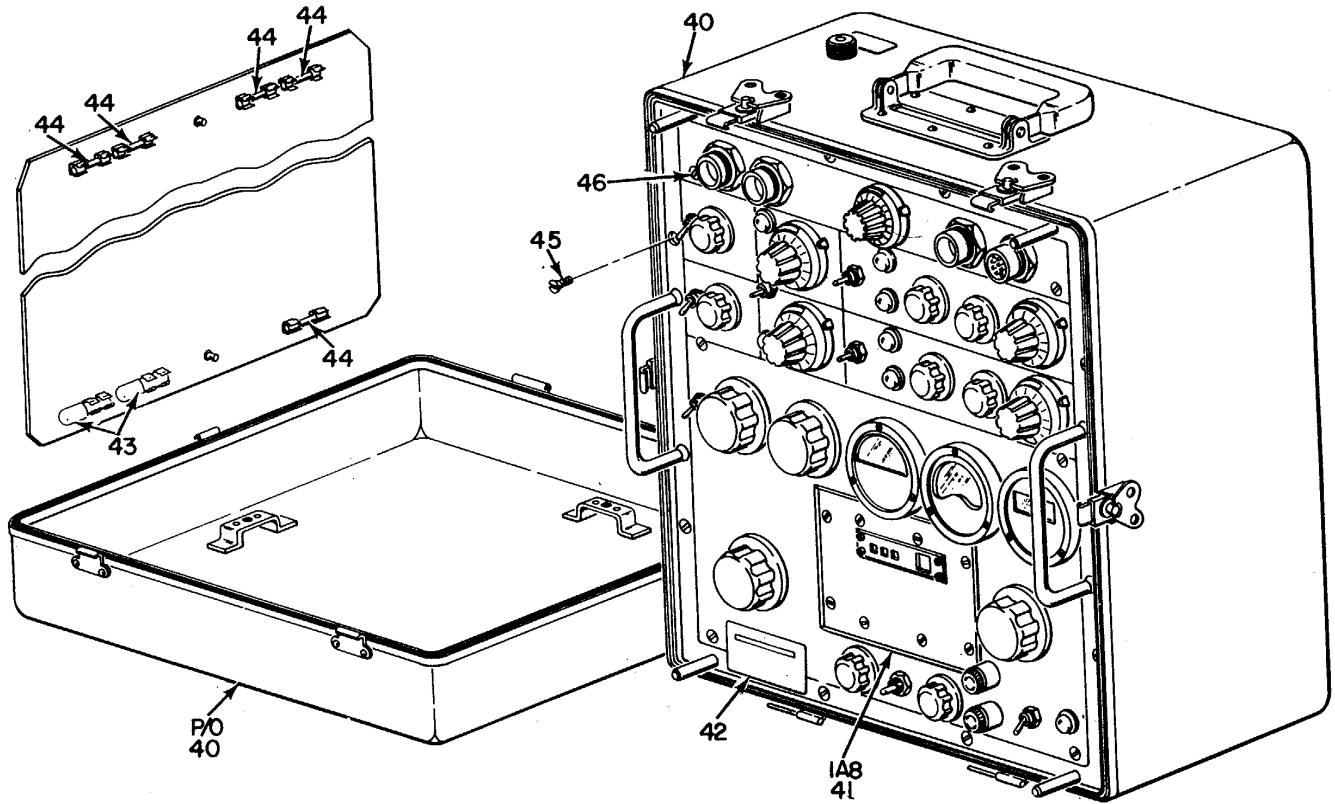
EL5KZ010

Figure 6. Power Supply PP-6056/ASM-339(V).

**SECTION II**

**TM 11-5805-371-20P**

(1) ILLUSTRATION		(2)	(3)	(4)	(5)	(6)	(7)	(8)
(a) FIG NO.	(b) ITEM NO.	SMR CODE	NATIONAL STOCK NUMBER	PART NUMBER	FSCM	DESCRIPTION  <i>USABLE ON CODE</i>	U/M	QTY INC IN UNIT
6	35	XDOHH		17519Q4	07187	GROUP 06 POWER SUPPLY PP-6056/ASM-339( V) HANDLE, BOW ..... 2CT	EA	1



ADDITIONAL PARTS LOCATIONS

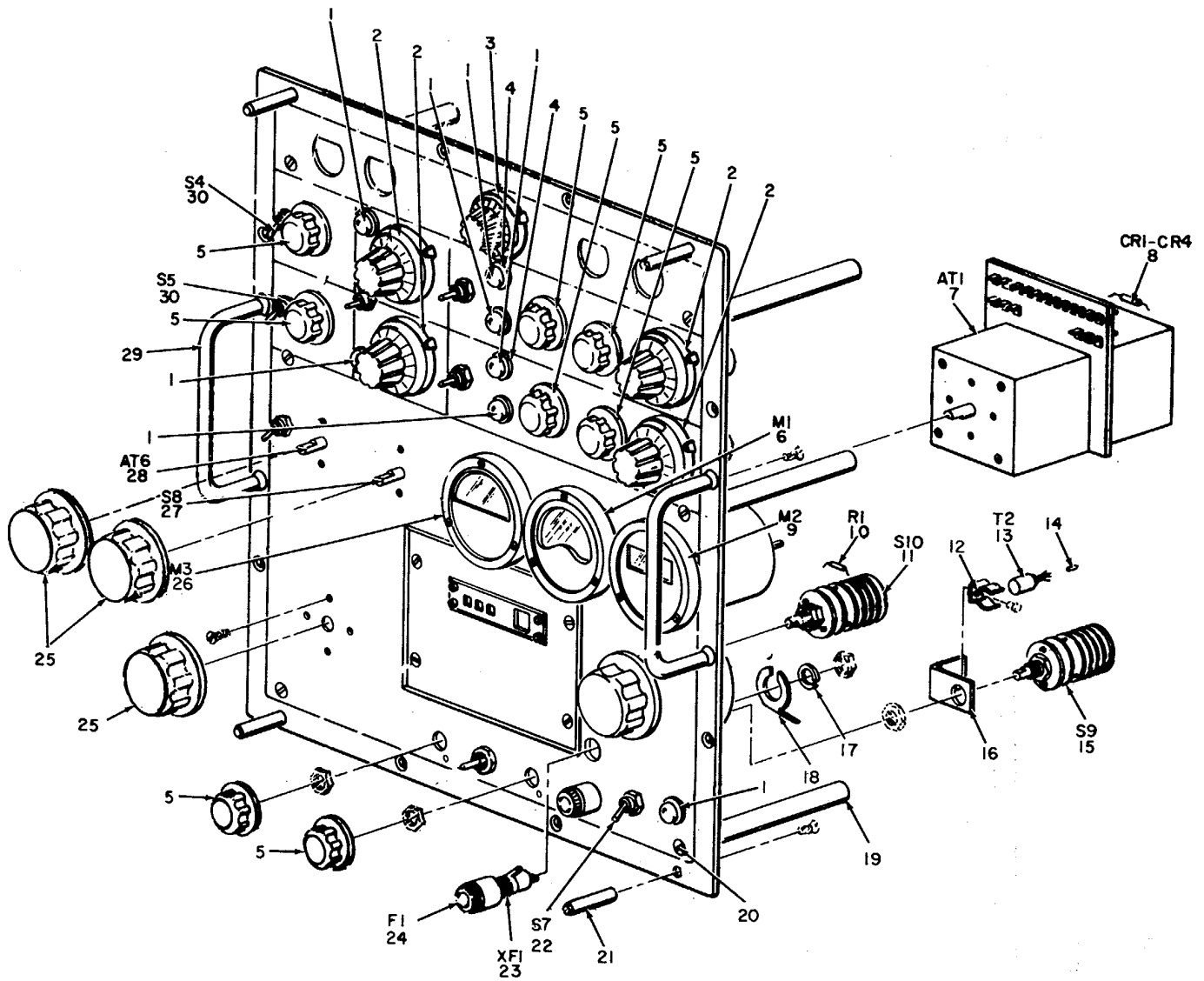
EL5KZ015

Figure 7. Control, Magnetic Compass Calibrator Set C-7694/ASM-339(V).

**SECTION II**

**TM 11-5805-371-20P**

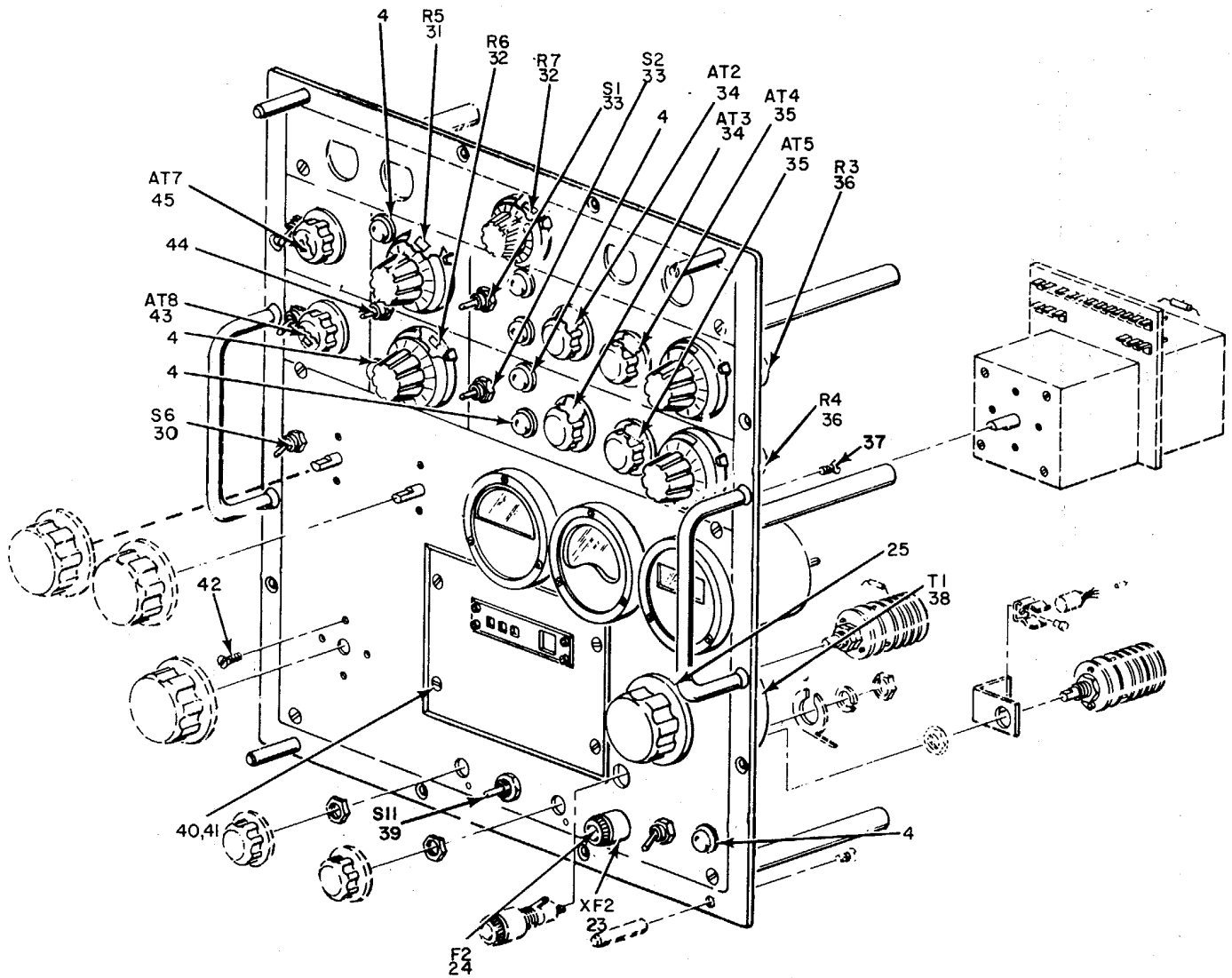
(1) ILLUSTRATION		(2)	(3)	(4)	(5)	(6)	(7)	(8)
(a) FIG NO.	(b) ITEM NO.	SMR CODE	NATIONAL STOCK NUMBER	PART NUMBER	FSCM	DESCRIPTION  <i>USABLE ON CODE</i>	U/M	QTY INC IN UNIT
						GROUP 08 CONTROL MAGNETIC COMPASS CALIBRATOR SET C-7694/ASM-339(V)		
7	40	XDOOL		ZCC254-254025454	98376	CASE,CONTROL CSL.....2CT	EA	1
7	41	PAOHH	6605-00-835-5641	2588156-1	07187	INDICATOR, HEADING .....2CT	EA	1
7	43	PAOZZ	6240-00-223-9100	NE51	711744	LAMP, GLOW .....2CT	EA	2
7	44	PAOZZ	5920-00-879-3570	F02A250V11-2AS	81349	FUSE,CARTRIDGE .....2CT	EA	5



PARTS LOCATIONS

EL5KZ016

Figure 8. Control, Magnetic Compass Calibrator Set C-7694/ASM-339(V), Control Console Panel Assembly (Sheet 1 of 2).



ADDITIONAL PARTS LOCATIONS

EL5KZ017

Figure 8. Control, Magnetic Compass Calibrator Set C-7694/ASMI-339(V), Control Console Panel Assembly (Sheet 2 of 2).

**SECTION II**

**TM 11-5805-371-20P**

(1) ILLUSTRATION		(2)	(3)	(4)	(5)	(6)	(7)	(8)
(a) FIG NO.	(b) ITEM NO.	SMR CODE	NATIONAL STOCK NUMBER	PART NUMBER	FSCM	DESCRIPTION  <i>USABLE ON CODE</i>	U/M	QTY INC IN UNIT
8	1	PAOZZ	624."00-22-9100	NE51	71744	LAMP, GLOW ..... 2CT	EA	7
8	2	PAOZZ	5355-00-852-0527	RBC	73138	DIAL, CONTROL ..... 2CT	EA	4
8	3	XDOZZ		H592-3	80294	DIAL, CONTROL ..... 2CT	EA	1
8	5	PAOZZ	5355-00-765-8230	1751815	56232	KNOB..... 2CT	EA	8
8	24	PAOZZ	5920-00-S8793570	F02A250V1-1/2AS	81349	FUSE, CARTRIDGE ..... 2CT	EA	2
8	25	PAOZZ	5355-00-579-1210	MS91528-3F2B	96906	KNOB ..... 2CT	EA	4

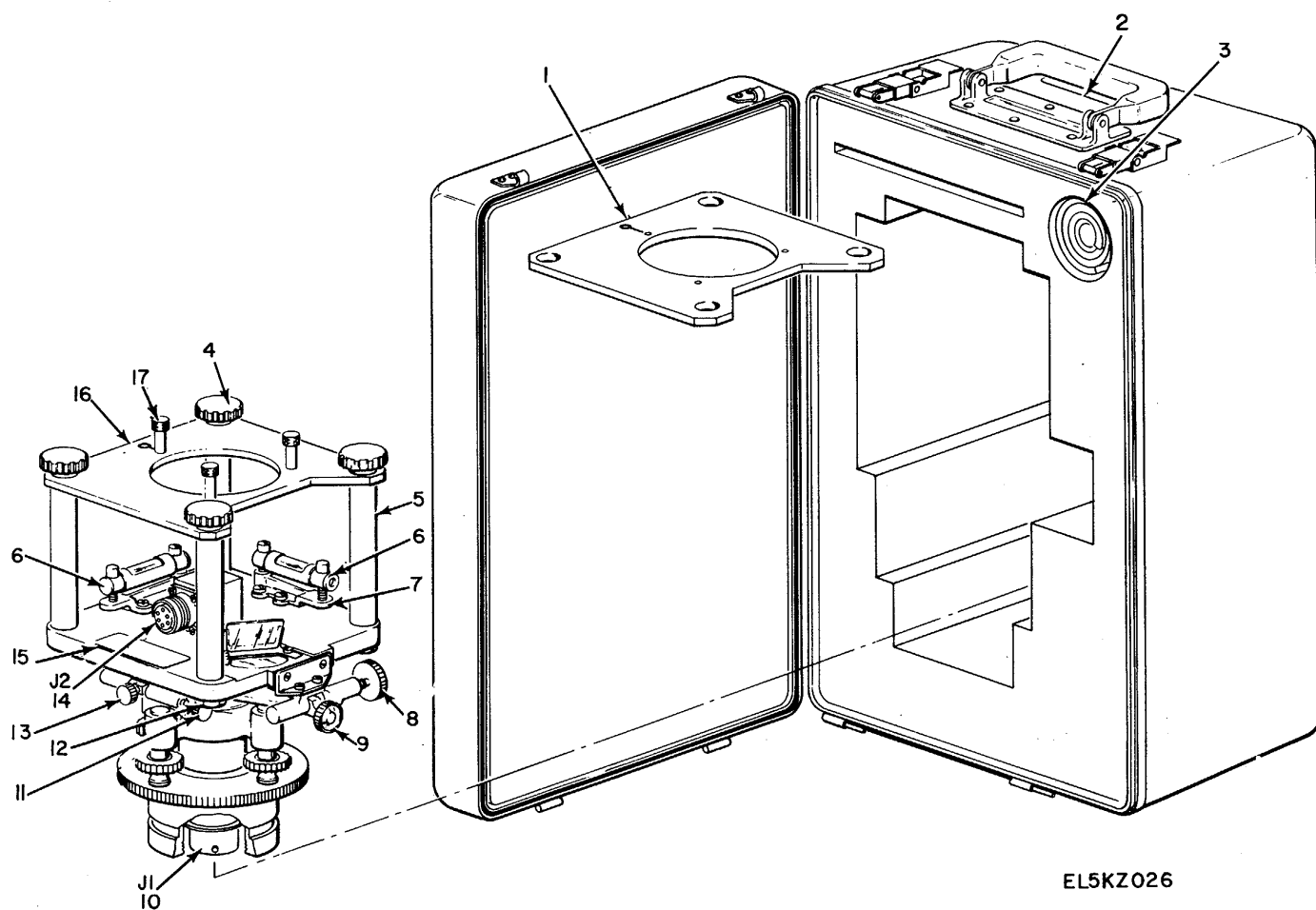


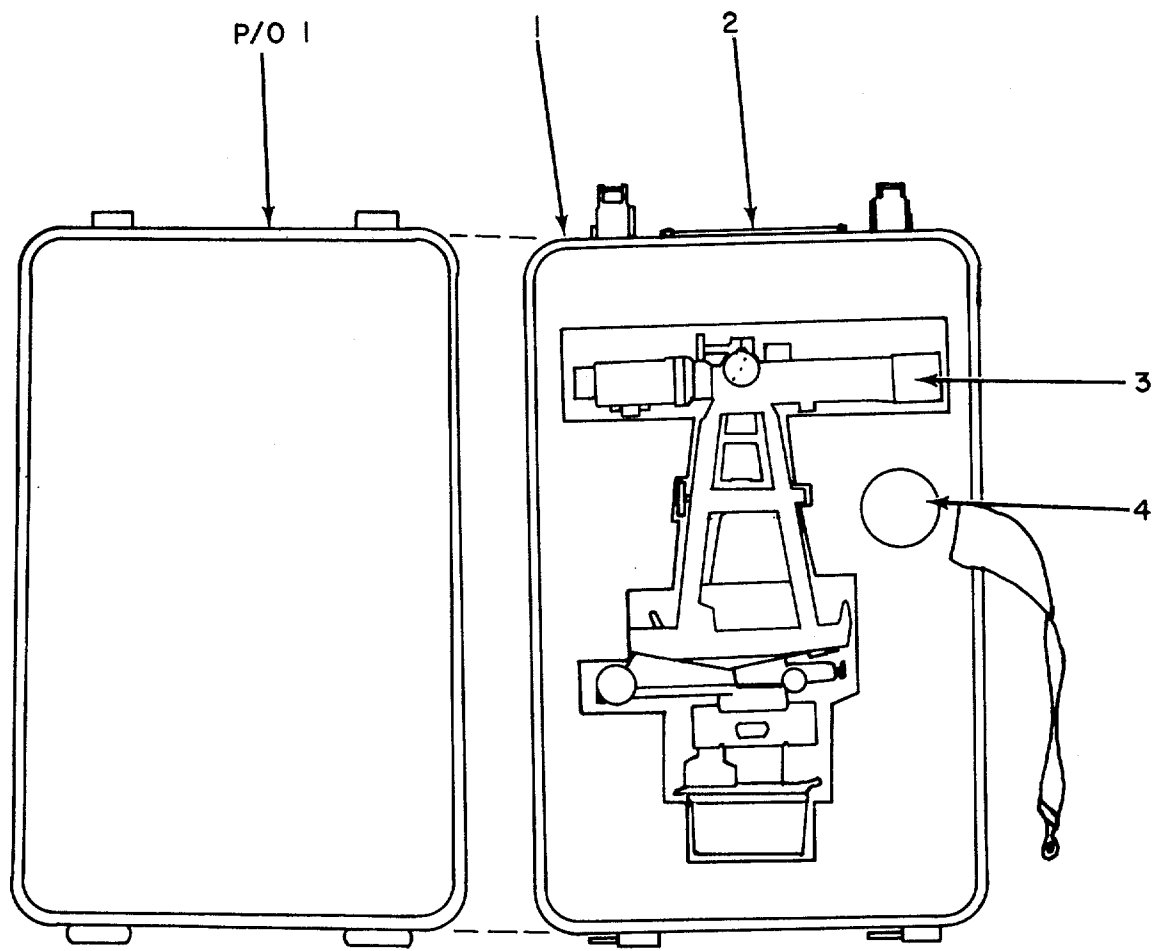
Figure 9. Turntable, Transmitter OQ-30/ASM-339(V).



**SECTION II**

**TM 11-5805-371-20P**

(1) ILLUSTRATION		(2)	(3)	(4)	(5)	(6)	(7)	(8)
(a) FIG NO.	(b) ITEM NO.	SMR CODE	NATIONAL STOCK NUMBER	PART NUMBER	FSCM	DESCRIPTION  <i>USABLE ON CODE</i>	U/M	QTY INC IN UNIT
						GROUP 09 TURNTABLE, TRANSMITTER		
						OQ-30/ASM-339(V)		
9	4	XDOZZ		A16067	06995	THUMBSCREW ..... 2CT	EA	4
9	8	PAOZZ	4920-759-6266	A9078	06995	TANGENT SCREW ..... 2CT	EA	1
9	9	PAOZZ	5305-00-868-1926	A9091	06995	SCREW ..... 2CT	EA	1
9	11	PAOZZ	4920-00-759-6267	A29007	06995	TANGENT SCREW ..... 2CT	EA	1
9	13	XDOZZ		A29006	06995	KNOB ..... 2CT	EA	1



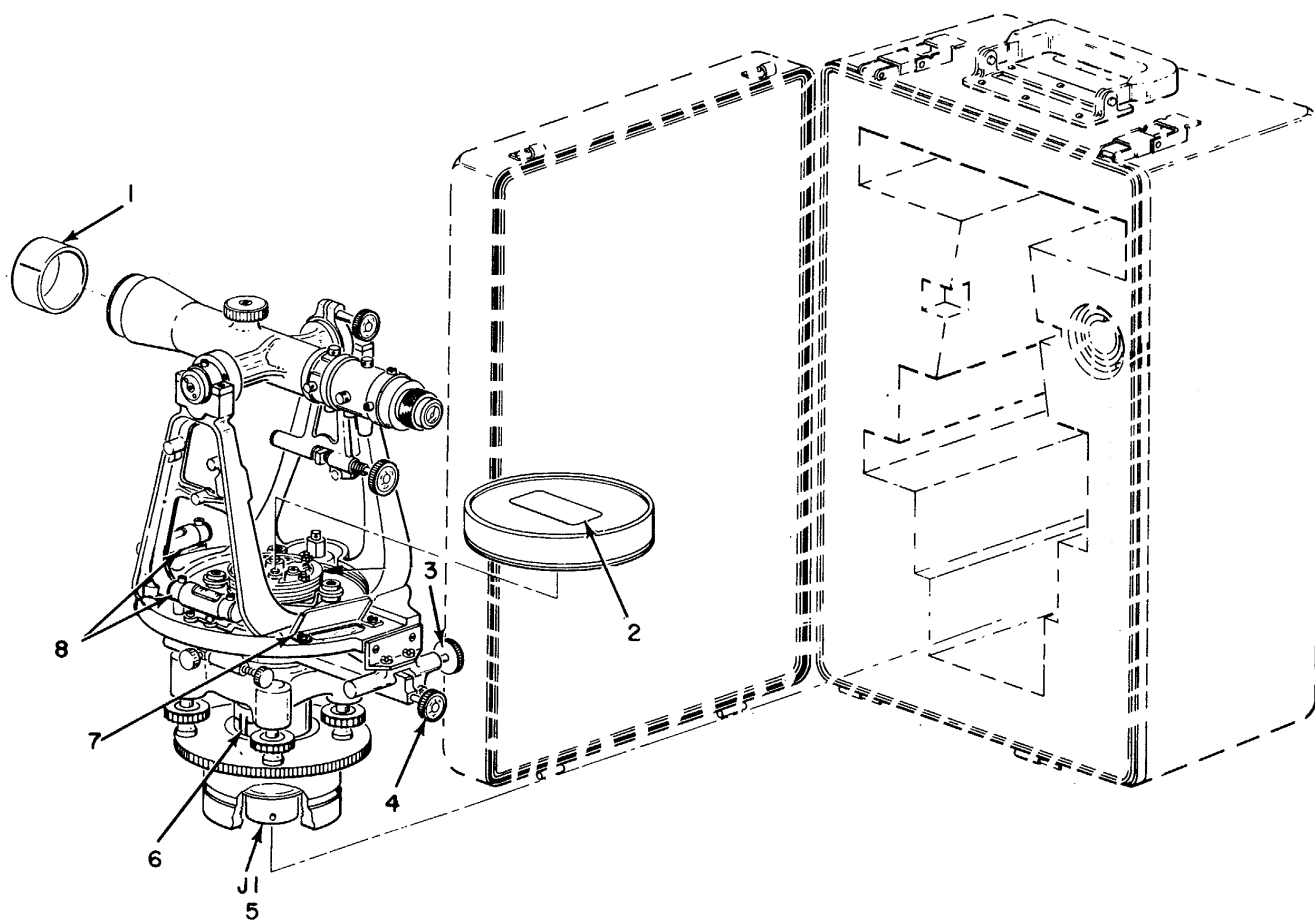
EL5K Z02 7

Figure 10. Monitor, Magnetic Field OQ-31/ASM-339(V).

**SECTION II**

**TM 11-5805-371-20P**

(1) ILLUSTRATION		(2)	(3)	(4)	(5)	(6)	(7)	(8)
(a) FIG NO.	(b) ITEM NO.	SMR CODE	NATIONAL STOCK NUMBER	PART NUMBER	FSCM	DESCRIPTION  <i>USABLE ON CODE</i>	U/M	QTY INC IN UNIT
10	3	XOOHH	6605-00-72-0258	MX-8113/AS,- 339(V)	80058	GROUP 10 MONITOR MAGNETIC FIELD  OQ-31/ASP-339(V)  MONITOR ASSEMBLY.....2CT	EA	1



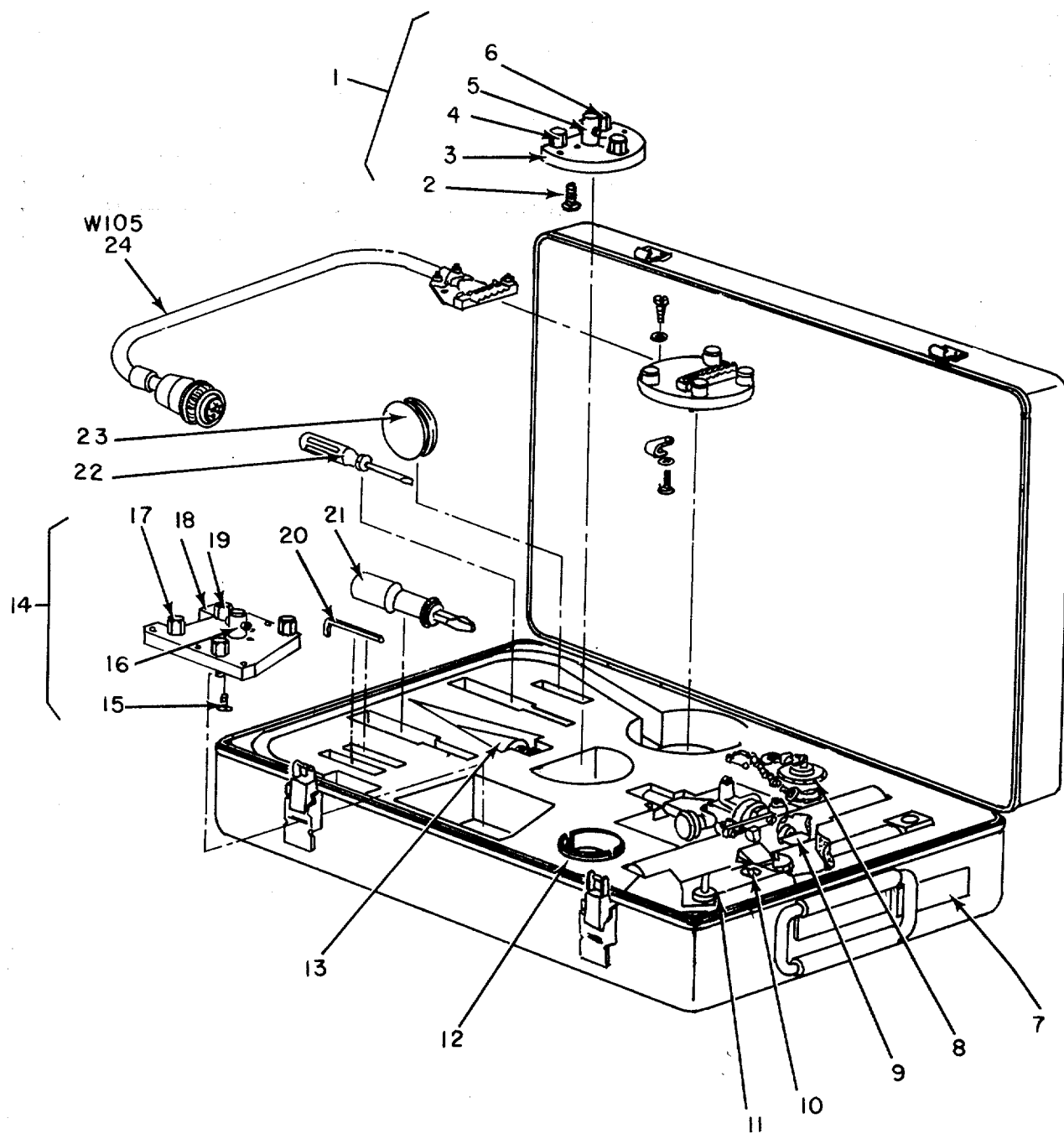
EL5KZ028

Figure 11. Monitor Assembly MX-8113/ASM-339(V).

**SECTION II**

**TM 11-5805-371-20P**

(1) ILLUSTRATION		(2)	(3)	(4)	(5)	(6)	(7)	(8)
(a) FIG NO.	(b) ITEM NO.	SMR CODE	NATIONAL STOCK NUMBER	PART NUMBER	FSCM	DESCRIPTION  <i>USABLE ON CODE</i>	U/M	QTY INC IN UNIT
						GROUP 1001 MONITOR ASSEMBLY MX-8113/ASM-339(V)		
11	1	PAOZZ	4920-00-957-6903	16284	06995	CAPSOBJECTIVE ..... 2CT	EA	1
11	3	PAOZZ	4920-00-759-6266	A9070	06995	TANGENT SCREW ..... 2CT	EA	2
11	4	PAOZZ	5305-00-868-1926	A9091	06995	SCREW ..... 2CT	EA	1



PARTS LOCATION

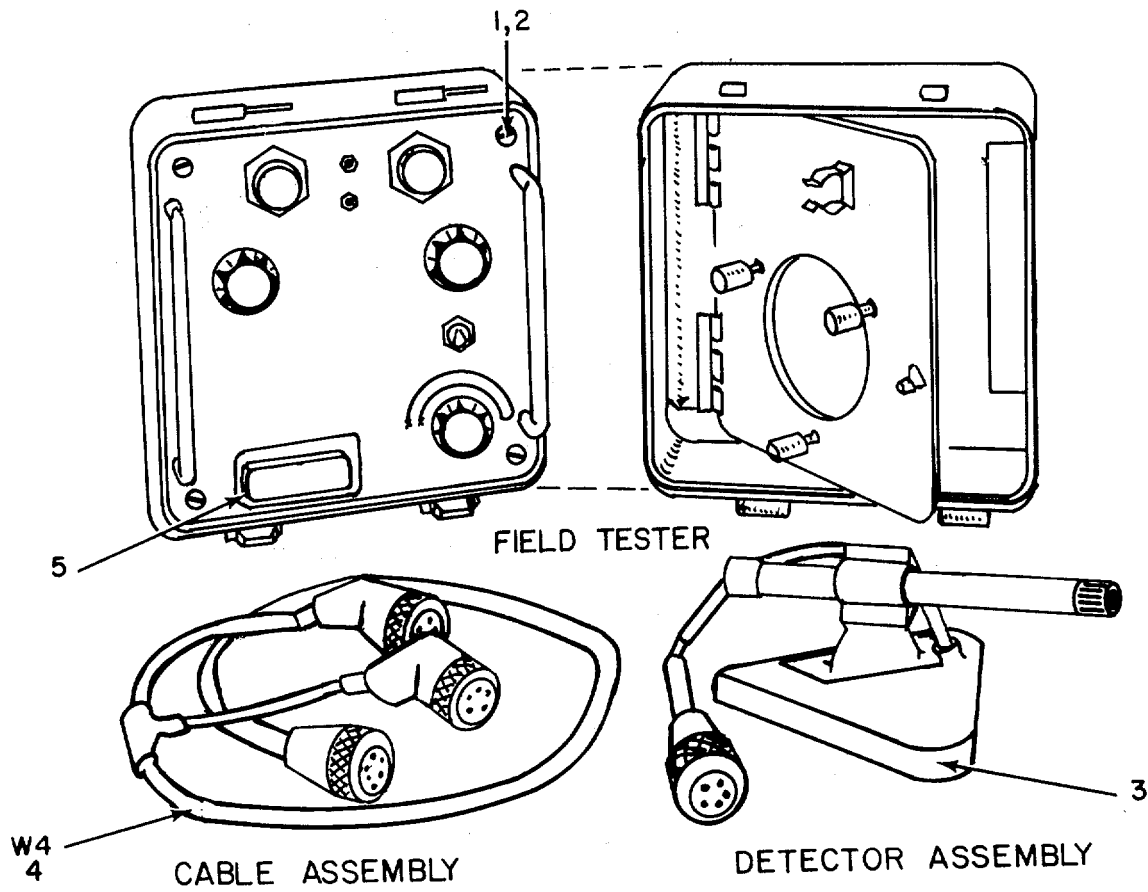
EL5KZ030

Figure 12. Alignment Kit, Electronic Equipment MK-1106/ASM-339(V)1.

**SECTION II**

**TM 11-5805-371-20P**

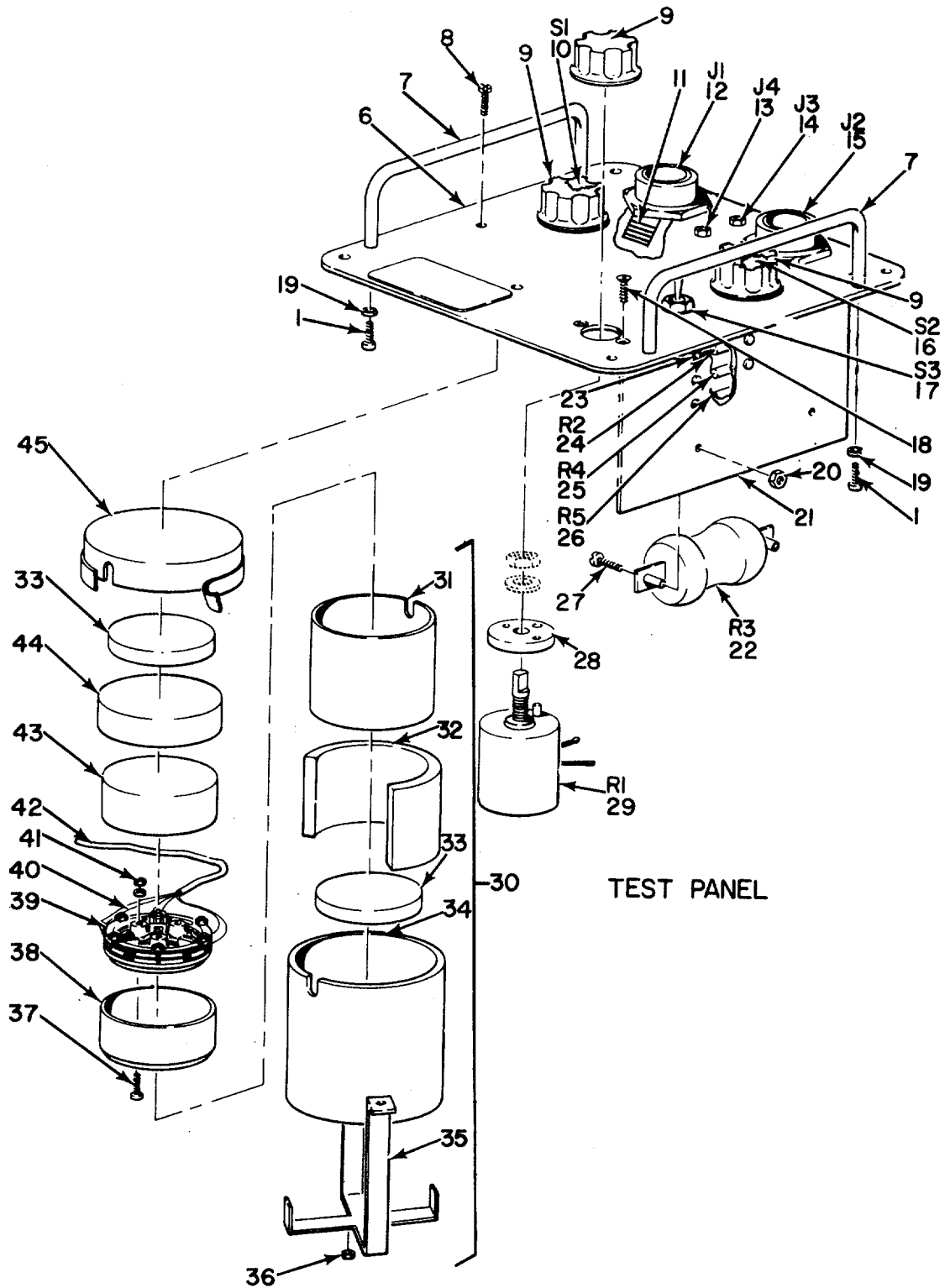
(1) ILLUSTRATION		(2)	(3)	(4)	(5)	(6)	(7)	(8)
(a) FIG NO.	(b) ITEM NO.	SMR CODE	NATIONAL STOCK NUMBER	PART NUMBER	FSCM	DESCRIPTION  <i>USABLE ON CODE</i>	U/M	QTY INC IN UNIT
						GROUP 11 ALIGNMENT KIT, ELECTRONIC EQUIPMENT MK-1106/ASM-339(V)1		
12	8	PAOZZ	6605-00-125-7401	2503581	07187	ADAPTER, COMPASS.....2CT	EA	1
12	12	PAOZZ	6650-00-22-8439	16283	06995	SHADE, OPTICAL INSTR .....2CT	EA	1
12	21	PAOZZ	5120-00-106-2462	9801	93389	SCREMO RIVER, FLAT TI.....2CT	EA	1
12	22	XDOZZ		BR181	96508	SCREWDRIVER, FL TIP .....2CT	EA	1



EL5KZ033

Figure 13. Field Tester, Magnetic Compass Calibrator AN/ASM-344 (Sheet 1 of 2).





EL5K2034

Figure 13. Field Tester, Magnetic Compass Calibrator AN/ASM-344 (Sheet 2 of 2).

**SECTION II**

**TM 11-4920-292-20P**

(1) ILLUSTRATION		(2)	(3)	(4)	(5)	(6)	(7)	(8)
(a) FIG NO.	(b) ITEM NO.	SMR CODE	NATIONAL STOCK NUMBER	PART NUMBER	FSCM	DESCRIPTION  USABLE ON CODE	U/M	QTY INC IN UNIT
						GROUP 12 FIELD TESTER , MAGNETIC COMPASS CALIBRATOR AN/ASM-344		
13	3	PAOHH	6605-00-782-0283	DT354ASM344	80058	DETECTOR ASSY MG AZ.....2CT	EA	1
13	4	PAOHH	6605-00-782-0227	CX10869/ASM-344	80058	CABLE ASS.SP BR2.....2CT	EA	1
13	9	PAOZZ	5355-00-765-8230	1751815	56232	KNOB .....2CT	EA	3

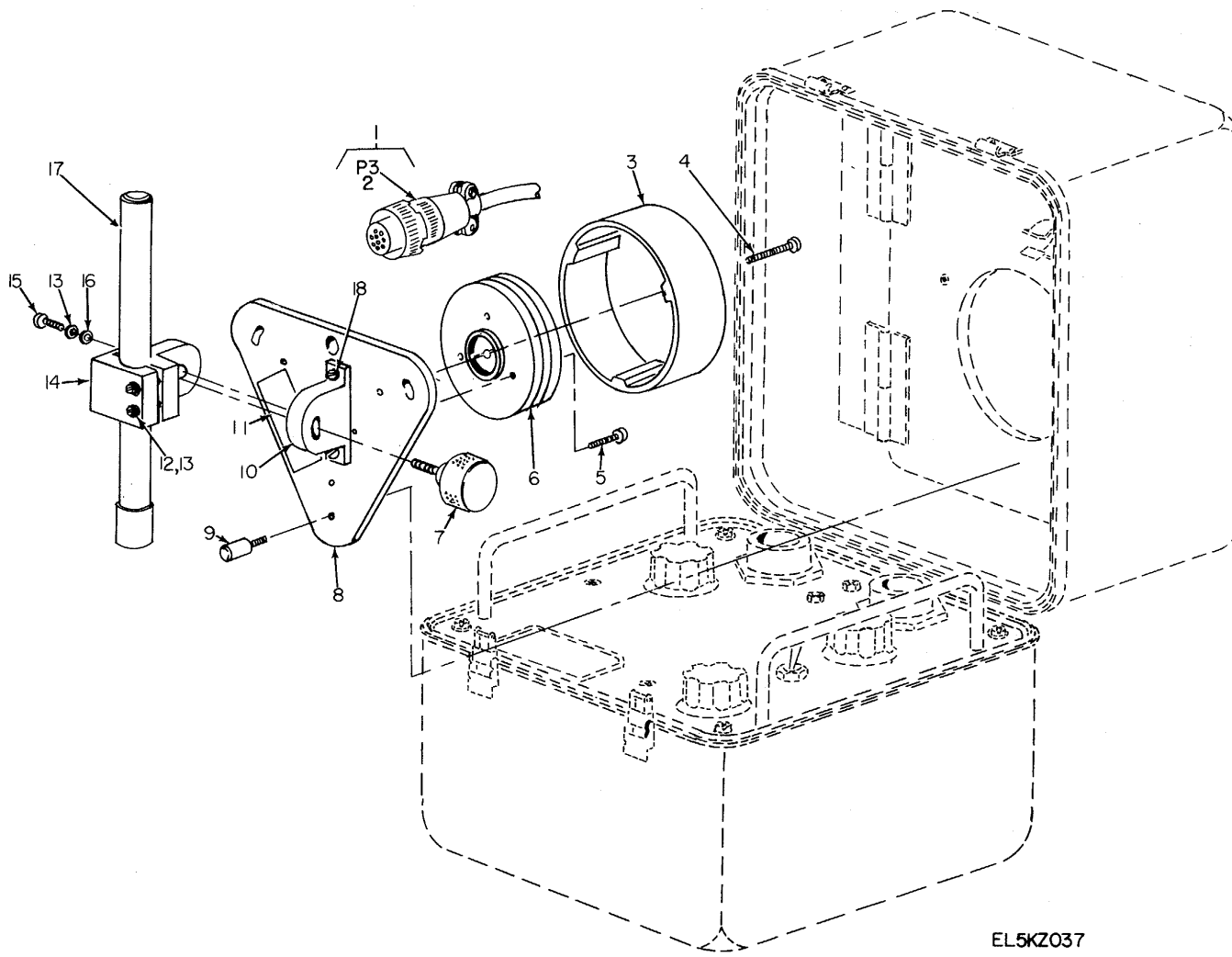


Figure 14. Detector Assembly, Azimuth DT-354/ASM-344.

**SECTION II**

**TM 11-4920-292-20P**

(1) ILLUSTRATION		(2)	(3)	(4)	(5)	(6)	(7)	(8)
(a) FIG NO.	(b) ITEM NO.	SMR CODE	NATIONAL STOCK NUMBER	PART NUMBER	FSCM	DESCRIPTION  USABLE ON CODE	U/M	QTY INC IN UNIT
14	7	PAOZZ	5355-00-421-1712	2519208	07187	GROUP 1202 DETECTOR ASSEMBLY, MAGNETIC AZIMUTH DT-354/AS--344  KNOB .....CT	EA	1

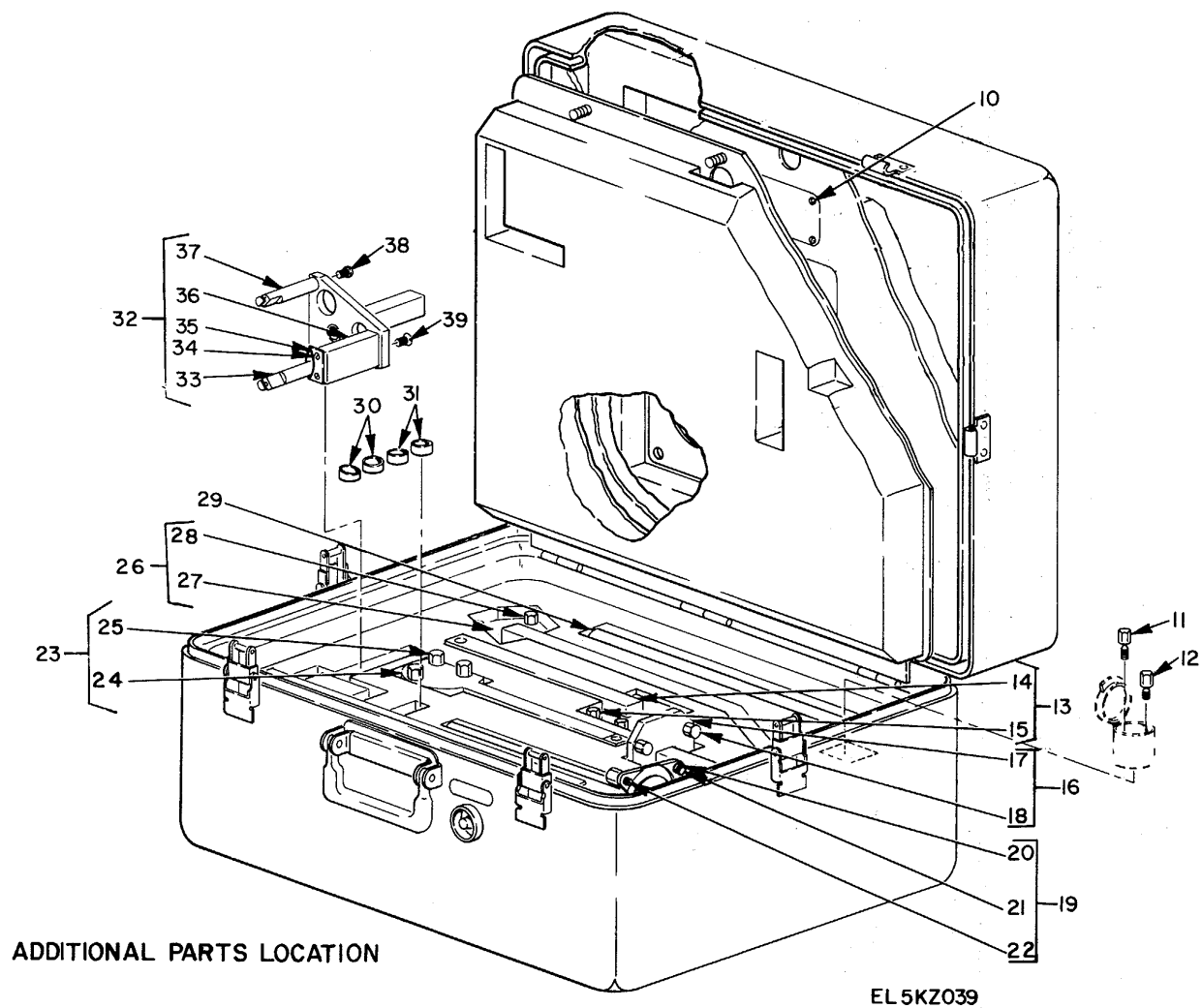


Figure 15. Adapter Kit, Magnetic Compass Calibration Set MK-1040A/ASN.

**SECTION II**

**TM 11-4920-292-20P**

(1) ILLUSTRATION		(2)	(3)	(4)	(5)	(6)	(7)	(8)
(a) FIG NO.	(b) ITEM NO.	SMR CODE	NATIONAL STOCK NUMBER	PART NUMBER	FSCM	DESCRIPTION  USABLE ON CODE	U/M	QTY INC IN UNIT
						GROUP 00 ADAPTER KITRMAGNETIC COMPASS CALIBRATION SET MK-1040A/ASN		
15	11	PAOZZ	5306-00-816-8057	1700924	07187	BOLT EXTERNAL REL .....DS2	EA	6
15	12	PAOZZ	5305-00-764-3013	2519197	07187	BOLT,EXT REL .....DS2	EA	2
15	13	XDDHH	6605-00-816-0011	MX-8166/ASN	80058	ADAPTER,COMPASS .....DS2	EA	2
15	15	PAOZZ	6605-00-816-8057	1700924	07187	BOLT,EXTERNALLY REL.....DS2	EA	4
15	16	XDDHH	6605-00-816-0115	MX-8164/ASN	80058	ADAPTED COMPASS(FOR UH-1) .....DS2	EA	1
15	18	PAOZZ	5306-00-816-8057	1700924	01187	BOLT EXTERNALLY REL EA .....DS2	EA	4
15	19	XDDHH	6605-00-816-0177	MX-B162/ASN	80058	ADAPTER,COMPASS.....DS2	EA	1
15	21	PAOZZ	5306-00-816-8057	1700924	07187	BOLT,EXTERNALLY REL .....DS2	EA	4
15	22	PAOZZ	5305-00-764-3013	2519197	07187	BOLT EXT REL .....DS2	EA	2
15	23	XDDHH	6605-00-816-0007	MX-8167/ASN	80058	ADAPTER , COMPASS.....DS2	EA	1
15	25	PAOZZ	5305-00-764-3013	2519197	07187	BOLT EXT REL .....DS2	EA	3
15	26	XDOHH	6605-00-816-0072	RX-8165/ASN	80058	ADAPTER,COMPASSDS2.....DS2	EA	1
15	28	PAOZZ	5306-00-816-8057	1700924	07187	BOLT,EXTERNALLY REL052.....DS2	EA	4
15	32	XDOHH	6605-00-042-5486	MX-8163/ASN	80058	ADAPTER, COMPASS.....DS2	EA	1

NOTE LATEST NATIONAL STOCK NUMBER AND PART NUMBER ASSIGNMENTS ARE INCLUDED AT END OF INDEX

STOCK NUMBER	FIGURE NO.	ITEM NO.	STOCK NUMBER	FIGURE NO.	ITEM NO.
6605-00-042-5486	15	32	5355-00-814-7236	2	16
5120-00-106-2462	12	21	5355-00-814-7237	2	7
6605-00-125-7401	12	8	6605-00-816-0007	15	23
6240-00-223-9100	7	43	6605-00-816-0011	15	13
6240-00-223-9100	8	1	6605-00-816-0115	15	16
6650-00-228-8439	12	12	6605-00-816-0177	15	19
5355-00-421-1712	14	7	5306-00-816-8057	15	11
4920-00-759-6266	9	8	5306-00-816-8057	15	15
4920-00-759-6266	11	3	5306-00-816-8057	15	18
4920-00-759-6267	9	11	5306-00-816-8057	15	21
6605-00-782-0228	1	7	5306-00-816-8057	15	28
6605-00-782-0231	1	12	6605-00-835-5641	7	41
6605-00-782-0234	1	11	5305-00-868-1926	9	9
6605-00-782-0237	3	6	5305-00-868-1926	11	4
6605-00-782-0258	10	3	5920-00-879-3570	8	24
6605-00-782-0282	1	2	5340-00-880-7987	1	3
6605-00-782-0300	1	13	4920-00-957-6903	11	1

PART NUMBER	FSCM	FIG. NO.	ITEM NO.	PART NUMBER	FSCM	FIG. NO.	ITEM NO.
A16067	06995	9	4	MX-8167/ASN	80058	15	23
A29006	06995	9	13	NE51	71744	7	43
A29007	06995	9	11	NE51	71744	8	1
A9078	06995	9	8	OQ-30/ASM-339(V)	80058	1	11
A9078	06995	11	3	OQ-31/ASM-339(V)	80058	1	10
A9091	06995	9	9	PP-6056/ASM-339(V)	80058	1	7
A9091	06995	11	4	RBC	73138	8	2
BR181	96508	12	22	RL-255/U	80058	1	4
C-7694/ASM-339(V)	80058	1	12	RL-257/U	80058	1	6
CX-10867/U(2000FT)	80058	5	5				
CX-10867/U(50FT)	80058	3	6	ZCC254-254025454	98376	7	40
CX-1C868/U(100FT)	80058	4	6	16283	06995	12	12
CX10869/ASM-344	80058	13	4	16284	06995	11	1
LY-6479/ASM-339(V)	80058	1	13	1700924	07187	15	11
F02A250V1-1/2AS	81349	8	24	1700924	07187	15	15
FOZA250V11-2AS	81349	7	44	1700924	07187	15	18
H592-3	80294	8	3	1700924	07187	15	21
J-2812/ASM-339(V)	80058	1	2	1751904	07187	15	28
2503007	07187	2	16			6	35
MX-8100/U	80058	1	3	2503008	07187	2	7
MX-8113/ASM-339(V)	80058	10	3	2503581	07187	12	8
2519197	07187	15	12				
MX-8162/ASN	80058	15	19	2519197	07187	15	22
MX-8163/ASN	80058	15	32	2519197	07187	15	25
MX-8164/ASN	80058	15	16	2519208	07187	14	7
MX-8165/ASN	80058	15	26	2588156-1	07187	7	41
MX-8166/ASN	80058	15	13	9801	93389	12	21

## LATEST STOCK NUMBER ASSIGNMENTS

STOCK NUMBER	FIG NO.	NO.	ITEM STOCK NUMBER	FIG NO.	ITEM NO.
4920-00-089-0186	1	8	6605-00-782-0227	13	4
5355-00-579-1210	8	25	6605-00-782-0256	1	9
5305-00-764-3013	15	12	6605-00-782-0276	1	10
5305-00-764-3013	15	22	6605-00-782-0283	13	3
5305-00-764-3013	15	25	5355-00-852-0527	8	2
5355-00-765-8230	8	5	5920-00-879-3570	7	44
5355-00-765-8230	13	9			

## LATEST PART NUMBER ASSIGNMENTS

PART NUMBER	FSCM	FIG. NO.	ITEM NO.	PART NUMBER	FSCM	FIG. NO.	ITEM NO.
DT354ASM344	80058	13	3	1751815	56232	8	5
MK-1106/ASM-339(V)1	80058	1	9	1751815	56232	13	9
MS91528-3F2B	96906	8	25	2587311	07187	1	8

ADDITIONAL LATEST NATIONAL STOCK NUMBER ASSIGNMENTS

STOCK NUMBER	FIG. NO.	ITEM NO.
6605-00-782-0229	1	1
6605-00-782-0288	5	5
6605-00-782-0291	4	6
6605-00-816-0072	15	26
8130-00-935-7133	1	5

ADDITIONAL LATEST PART NUMBER ASSIGNMENTS

PART NUMBER	FSCM	FIG. NO.	ITEM NO.
MX8114/U	80058	1	1
RL256/U	80058	1	5

- U S GOVERNMENT PRINTING OFFICE 1979-603-028/1123



By Order of the Secretary of the Army.

BERNARD W ROGERS  
*General, United States Army*  
*Chief of Staff*

Official:

J. C. PENNINGTON  
*Major General, United States Army*  
*The Adjutant General*

DISTRIBUTION

To be distributed in accordance with DA Form 12-36A, Direct and General Support Maintenance requirements for AN/ASM-339 Equipment.

RECOMMENDED CHANGES TO EQUIPMENT TECHNICAL PUBLICATIONS



THEN...JOT DOWN THE  
DOPE ABOUT IT ON THIS FORM.  
CAREFULLY TEAR IT OUT, FOLD IT  
AND DROP IT IN THE MAIL.

SOMETHING WRONG WITH PUBLICATION

FROM: (PRINT YOUR UNIT'S COMPLETE ADDRESS)

DATE SENT

PUBLICATION NUMBER

PUBLICATION DATE

PUBLICATION TITLE

BE EXACT PIN-POINT WHERE IT IS

PAGE NO.	PARA-GRAPH	FIGURE NO.	TABLE NO.
----------	------------	------------	-----------

IN THIS SPACE, TELL WHAT IS WRONG AND WHAT SHOULD BE DONE ABOUT IT.

PRINTED NAME, GRADE OR TITLE AND TELEPHONE NUMBER

SIGN HERE

